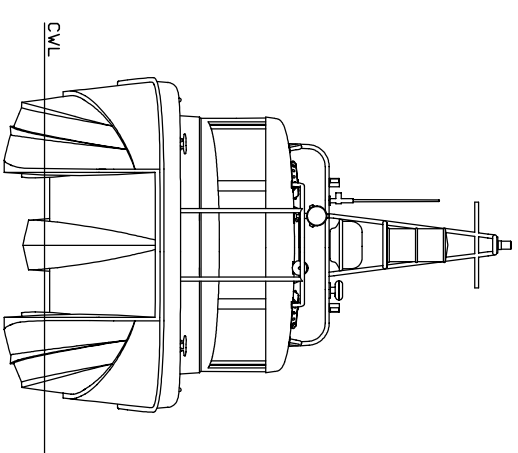
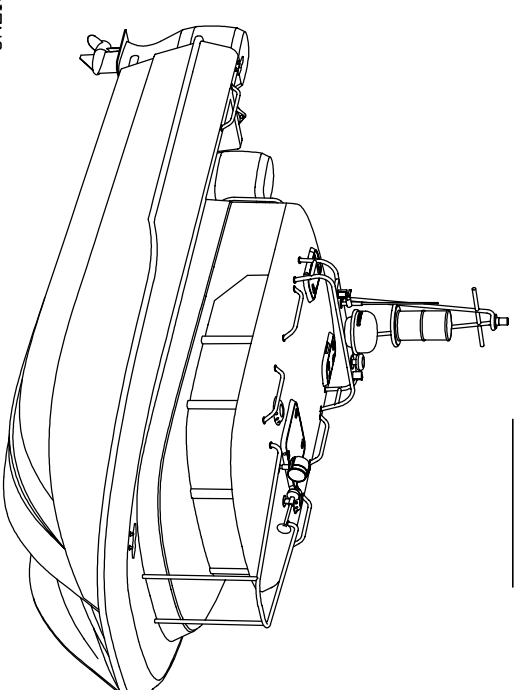


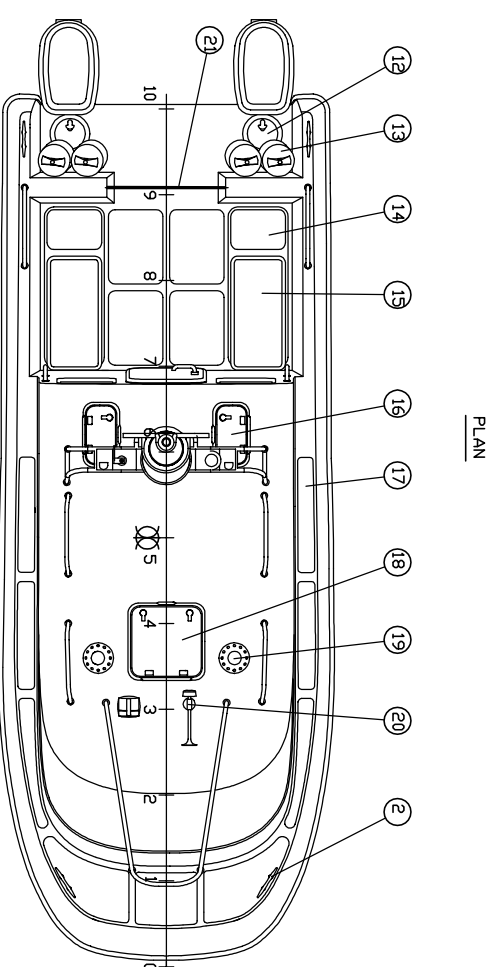
VIEW ON THE STARBORD



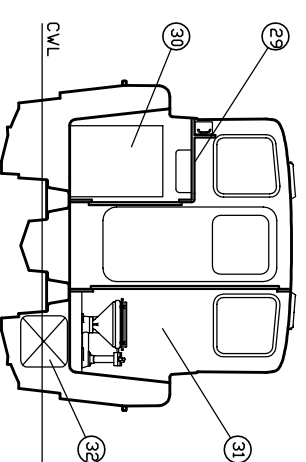
VIEW ON THE BOW



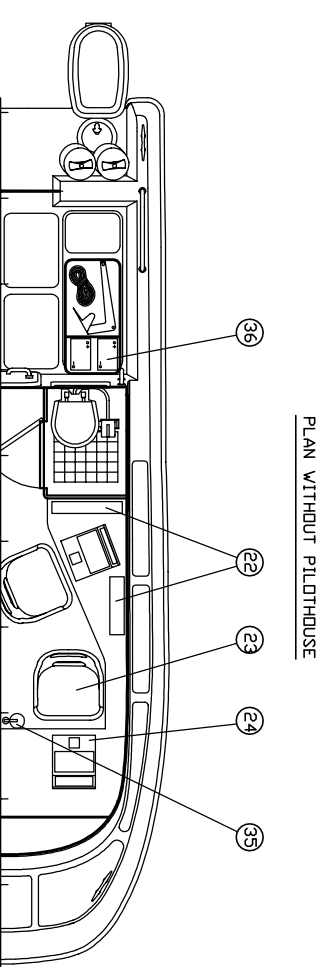
PERSPECTIVE VIEW



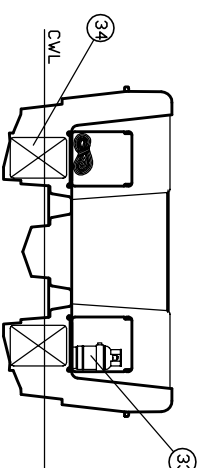
PLAN



SECTION 6
Lkg Aft



PLAN WITHOUT PILOTHOUSE



SECTION 8
Lkg Aft

PRINCIPAL DIMENSIONS

LENGTH ON DECK 6.40 m
 LENGTH WATERLINE 5.50 m
 BEAM MAX 2.45 m
 DRAFT (CWL) 300 mm
 DISPLACEMENT (Lght) 1350 kg
 FUEL 180 l
 WATER 60 l
 OUTBOARD ENGINE POWER 2x90 hp
 HULL MATERIAL FIBERGLASS
 MAX LEAD 800 kg
 DESIGN CATEGORY C

Item Nbr	Name	Comment
1	Outboard engine 2x90 hp	
2	Cleat	
3	Hand rail	
4	Light mast with navigation light	
5	Radar reflection	
6	Radar	
7	Headlight	
8	Fence	
9		
10		
11		
12	Inspection cover	
13	Fenders	
14	Cover of fuel tank	
15	Deck storage / Seating	
16	Portlight	
17	Nonslip coating	
18	Hatch	
19	Ventilating cap	
20	Horn	
21	Guard chain	
22	Special hydrographic equipment	
23	Seat	
24	Notebook	
25	Dven	
26	Cooler	
27	Sink	
28	Steering consol	
29	Galley	
30	Generaotr 3 kw	
31	WC	
32	Septic tank	
33	Gas ballon	
34	Fuel tank 90 L	
35	Fire extinguisher	
36	Accumulators	
37		
38		



6400-020-001GV		Letter	Weight	Scale
SEA WORKER 6400				1:40
hydrograph				
General View		Sheet	Total sheet	1
STARLING MULTIHULLS Oy EW-Assistance Ltd				